



TSS combines the following technical information for the entire classified road network of Baden-Württemberg with a length of around 26,000 km:

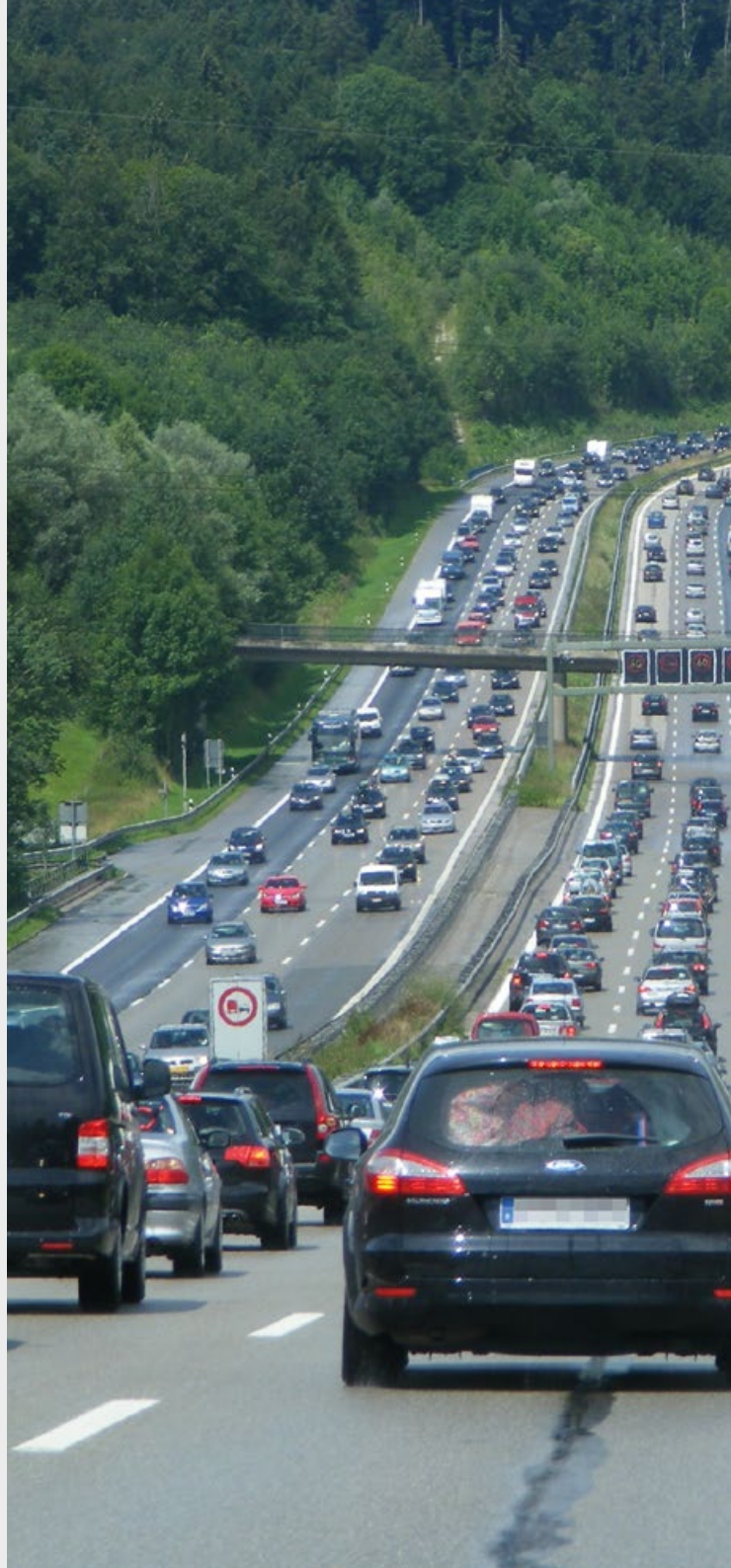
- links and nodes
- traffic volumes
- velocities
- accident data

These data come from various data-bases which are continuously updated and therefore highly up-to-date.



These are enriched with information of the road:

- road geometrie (width, gradient, curvature)
- road condition
- road images
- road structure and layer data



WINNER OF THE E-GOVERNEMENT COMPETITION 2018
TRAFFIC SAFETY SCREENING



DO YOU LIKE MORE INFORMATION?

Please do not hesitate to contact DTV-Verkehrsconsult GmbH in questions of software and the Ministry of Transport Baden-Württemberg in questions of application.



DTV-Verkehrsconsult GmbH
Pascalstraße 53 · 52076 Aachen · Germany
Phone: +49 2408 7047 0 · Mail: info@dtv-verkehrsconsult.de
www.dtv-verkehrsconsult.de



Baden-Württemberg

Ministry of Transport Baden-Württemberg
Dorotheenstraße 8 · 70173 Stuttgart
Phone: +49 711 231-5830
Mail: anne.benner@vm.bwl.de · martin.pozybill@vm.bwl.de
www.vm.baden-wuerttemberg.de



Baden-Württemberg
MINISTRY OF TRANSPORT

VISION ZERO
TRAFFIC SAFETY SCREENING



Mobility and quality of life.
In our cities and rural areas.

VISION ZERO



THE TARGET

In order to achieve **VISION ZERO** – road traffic without fatalities and serious injuries – the EU is calling for increased cooperation between the administration, industry and science with the safe-system-approach. This is precisely the approach taken by Traffic Safety Screening.

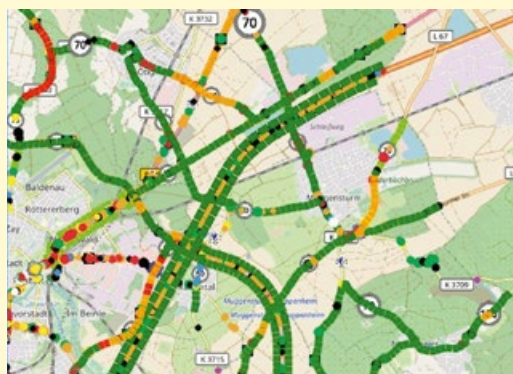
OUR APPROACH

TRAFFIC SAFETY SCREENING (TSS) is a web-based internal expert tool for the administration. It enables the members of the accident commissions and the employees of the road construction administration in Baden-Württemberg (Germany) to access all relevant data required for accident analysis. This improves the effectiveness of the elimination of accident-related malfunctions in the road traffic infrastructure on a central data platform.

But TSS can do even more. Not only the data is provided in the system, but also an assessment of the entire road network is carried out in 100 m steps.

In addition, it offers independent tools for online data analysis. Finally, the platform also serves as an electronic folder for the documentation of accident prevention work.

TSS contains a large amount of sensitive data. Therefore, it has a complex authorization system, so that each user can only see the data for which he is enabled.



DESIGN YOUR OWN MAP WITH PREPARED LAYERS!

Frequently used:

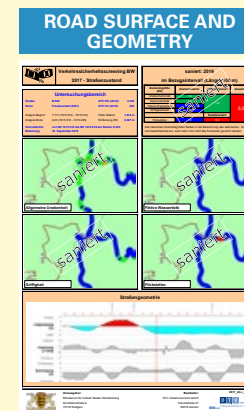
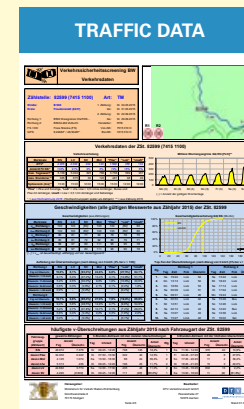
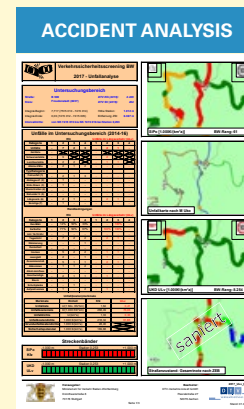
- Accident cost density
- Safety potential
- Traffic volumes
- Speedings
- Road surface condition
- Accident black spots



Not only presentation – we already evaluate for you and highlight the most important points. The “worst” 5% of the data are marked in red or with large symbols.

FACTS AND OVERVIEW

Up to 700 individual pieces of information are available for each of the approximately 300.000 road intervals. These are clearly summarised in 4 fact sheets. The “Accident analysis” page also displays a summary of all results.



These fact sheets are an ideal basis for accident analysis. Their information can be used to define targeted measures for accident prevention.

TSS offers analysis tools, e.g. for an indepth accident analysis. All available accident parameters can be filtered. Each time the filter criteria are changed, the most frequent characteristics or totals are calculated automatically.

Auswahlfunktion		Auf View anzeigen					Gesamtzahl der Fälle	
Landkreis	Stufe	1	2	3	4	5	Summe	Prozent
Münchener Stadt	...	0,000	0,000	0,000	0,000	0,000
Datum	...	06.06.2015	24.09.2015	27.09.2015	07.09.2016	21.09.2016	06.06.2017	3.00 %
Monat	...	Jan	Feb	Mar	Apr	Mai	Juni	...
Verfallsdatum
Verfallsdatum 2
Verfallsdatum 3
Verfallsdatum 4
Verfallsdatum 5
Verfallsdatum 6
Verfallsdatum 7
Verfallsdatum 8
Verfallsdatum 9
Verfallsdatum 10
Verfallsdatum 11
Verfallsdatum 12
Verfallsdatum 13
Verfallsdatum 14
Verfallsdatum 15
Verfallsdatum 16
Verfallsdatum 17
Verfallsdatum 18
Verfallsdatum 19
Verfallsdatum 20

Finally, TSS also contains the function of a digital file, which documents the processing status of each on-site intervention and is available to all authorized users.

WHAT DO YOU NEED FOR TSS?

A digital road network, the traffic, design and accident data to be displayed – and a browser. That’s it!

TSS HAS A MODULAR STRUCTURE

Ongoing further developments are made in various areas. Especially the modules specified and realized on customer request create a tool exactly according to your requirements.